

Cavity Filter

ACF5650M5850M80S

Revision record

Date	Version	Author	Revision description	Comment
2024/12/13	V1.0	Sam	Created	/
2024/12/16	V1.1	Sam	Update Insertion loss	Customer requirement

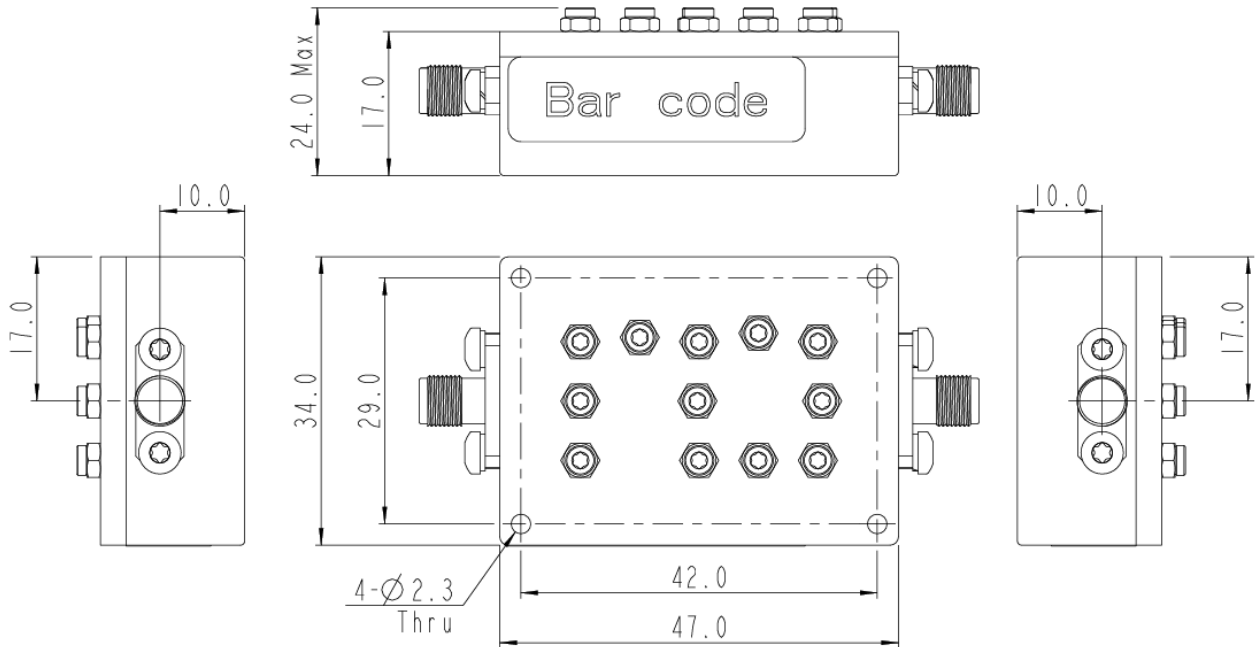
Electrical specification

Parameter	Specification
Frequency range	4650-5850MHz
Insertion loss	≤1.0dB
Ripple	≤0.8dB
Return loss	≥18dB
Rejection	≥80dB@4900-5350MHz
Power	20W CW Max
Impedance	50Ω

Mechanical specification

Parameter	Specification
Dimension	L x W x H: 47mm x 34mm x 17mm(24mm Max)
Connectors	SMA-Female
Finish	Silver
Notes	Material shall be RoHS 6/6

Outline



Test curve

